

June 2024



Waukesha County Fair

Wednesday, July 17th through Sunday, July 21st 2024

All exhibitors, whether showing in Junior or Open classes, must sign up for classes by June 15. Members may sign up for either Junior classes or Open classes but not both, even if using a different horse. Horses may not be shared among competitors.

NEW FOR 2024 - Junior fair exhibitors may keep their horses at the fair or trailer in for the day of the show! Horses are no longer required to stay for the for the week.

Sign up for any class you may be interested in. You can always cancel classes at the event, however you cannot add classes after registration closes.

The theme for the horse barn will be **"Fun in the Sun"**. Each club will work together to come up with stall decorations for their members to match the theme. Even if you don't have a horse in the barn, you are still invited to make a poster or help with decorations!

More information about fair later in the newsletter.

Register by June 15!!

Register Now!
Click Here

Don't Miss the **DEADLINE!**

Waukesha County Fair Registration

Registration for the Waukesha County Fair is **open now until June 15**. Showing at fair is a highlight of the summer for many members. **There are several classes to enter even if you don't have a horse**, including hippology, model horses, photography, educational posters, and more!

Livestock classes Dept 206
Educational classes Dept 210

Find out more information on our website [HERE](#)



[Waukesha County 4-H Horse Project](#)



wc4horse.org



waukesha.horse@gmail.com

Upcoming Events:

- MFSC Speed Show
Saturday, June 15
- Trail Obstacle Clinic
Wednesday, June 19
- MFSC Pleasure Show
Saturday, June 22
- FRSC Pleasure Show
Sunday, June 23
- Horse Board Meeting
Tuesday, July 2

Project Shirts

Shirts are ready for delivery! Megan will be reaching out to you shortly to set up a time for you to pick up your ordered shirts. If you didn't order a shirt but would still like one, there is still time! We have some extra shirts ready, or we can order additional shirts. Contact waukesha.horse@gmail.com to place an order.



Add the Horse Project calendar to your Google calendar [HERE!](#)



Fox River Saddle Club Pleasure Show

Show Recap

Congratulations to the 4-Hers who rode in the first show of the season on Sunday, June 2 at West 20 Ranch & Saddle Co.

We had five members show in a variety of classes.

- Four in halter
- Four in showmanship
- Two in WTC English
- Two in WT English
- One in WTC Western
- Two in WT Western

Our members all did a great job and went home with lots of ribbons! There were two recent project graduates that showed as well. It's always great to see members continue with their passions into adulthood.

Thank you to the parents, youth, leaders, and former leaders who volunteered at the show!

- Maureen Martin (chair)
- Patty Sumner (announcer)
- Barb Shudy (registration)
- Amie Lalor (food booth)
- Angie Conto-Smith (ring master)
- Shelly Adkins (ring master)
- Kendall Smith (ribbons)
- Chad Niles (gate)
- Megan Peterson (gate)
- Gina Ehler (food booth)



Johanna with Cupcake



Ella with Adobe



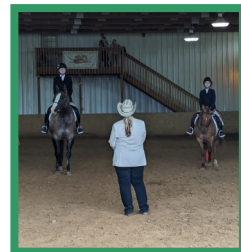
Wyatt with Zoey



Gwendolyn with Annie



Kendall with Davie



Waukesha 4-H project members and alumni
Ella, Wyatt, Johanna, Kendall, Gwendolyn, Ellie, and Isabella,



4-H Project Days
Clinics Signup

The
More
You
Know

The
More
You
Grow



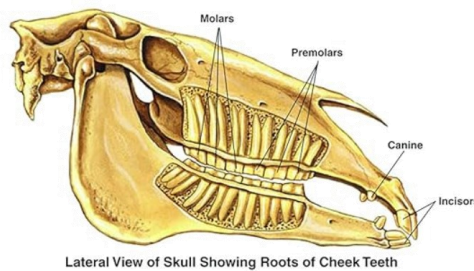
To Make the Best
BETTER

Let's talk about teeth!

Horses have different types of teeth that serve different purposes:

- Incisors: Also called nippers, these teeth are used to crop grass close to the ground. Horses have six upper and six lower incisors that work together to grasp stalks.
- Canines: Also called bridle teeth, these teeth are located between the incisors and cheek teeth, with two on top and two on bottom. They only appear in male horses, 20–25% of the time in mares, and are usually smaller in mares.
- Premolars: Also called cheek teeth or jaw teeth, these teeth are located behind the interdental space and chew food bitten off by the incisors. The first premolars are called wolf teeth and are often pulled for better bit comfort.
- Molars: These teeth are used for chewing and grinding and are located on both sides of the mouth, top and bottom.

DENTAL ANATOMY



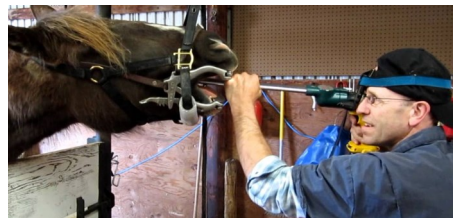
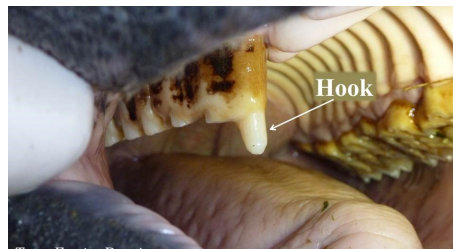
Lateral View of Skull Showing Roots of Cheek Teeth

Why is dental care important?

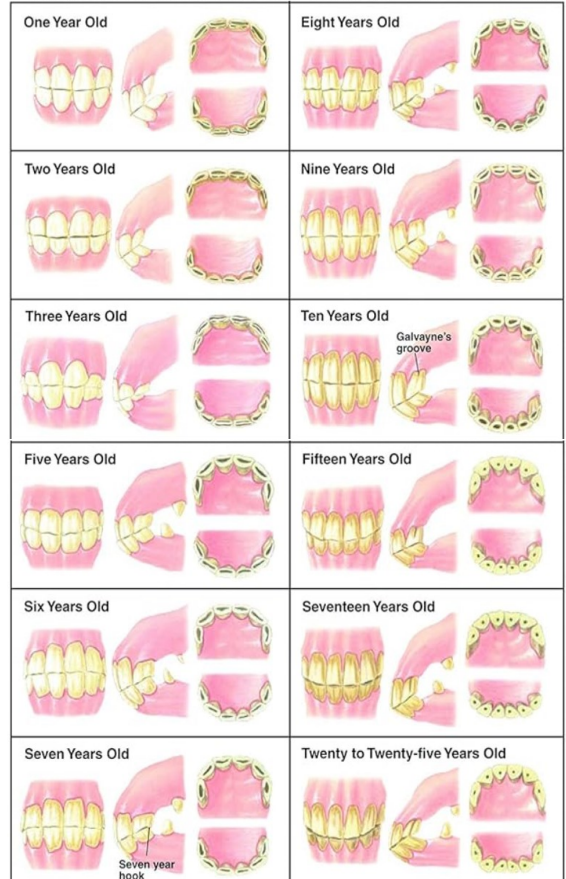
Horses develop sharp points on the teeth which poke into the gums causing pain. The pain can be the point that a horse will lose their appetite and/or drop food from their mouth. Signs can include:

- Dropping hay or grain from the mouth while chewing
- Major drooling while eating
- Weight loss due to reduced appetite
- Resistant or uncomfortable with the bit

Teeth need to be inspected twice annually by a vet to determine if they need to be floated. Teeth floating is the process of removing the sharp points from horse's teeth making an even grinding pattern for chewing.

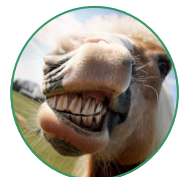


DETERMINATION OF THE HORSE'S AGE



Did you know?

- Horses have baby teeth and adult teeth, just like us.
- Analyzing a horse's teeth is the most accurate way to tell their age.
- Floating a horse's teeth may look unpleasant, but it doesn't hurt.
- Adult horses have between 36 and 44 teeth
- Male horses have more teeth than females
- Your horse's teeth take up more space in their head than their brains!





Menomonee Falls
Saddle Club
[N75W25500 WI-164](#)
[Menomonee Falls, WI 53051](#)

Fox River Saddle Club
West 20 Ranch &
Saddle Co.
[W4812 WI-20](#)
[East Troy, WI 53120](#)

Waukesha Expo Center
[1000 Northview Rd](#)
[Waukesha, WI 53188](#)

Wisconsin Fair Park
[1000 Northview Rd](#)
[Waukesha, WI 53188](#)

Project Days:
Christ Lutheran School
[22970 Maple Ave](#)
[Big Bend, WI 53103](#)

[4-H Project Days](#)
[Clinics Signup](#)



[Click here for Volunteer Sign-Up for MFSC Shows](#)

Waukesha 4-H Show Schedule

Saturday, June 15, 2024
Speed Show
Menomonee Falls Saddle Club

Saturday, June 22, 2024
Pleasure Show
Menomonee Falls Saddle Club

Sunday, June 23, 2024
Pleasure Show
West 20 Ranch & Saddle Co.

July 17-21, 2024
Waukesha County Fair
Waukesha County Fairgrounds

Friday, August 2, 2024
Speed Show
Menomonee Falls Saddle Club

Saturday, August 3, 2024
Pleasure Show
Menomonee Falls Saddle Club

Sunday, August 18, 2024
Pleasure Show
West 20 Ranch & Saddle Co.

Saturday, September 21, 2024
Speed Show
Menomonee Falls Saddle Club

Fair Schedule of Events:

Tuesday

- Junior Fair Entries Face to Face Judging 2 - 7 pm in the Arena Exhibit Hall

Wednesday

- Horses may arrive beginning at 11am until 7pm

Thursday

- Horses may arrive beginning at 9 am.
- Hippology 4:00-6:00pm
- **Mandatory exhibitor meeting 6:30pm**

Friday

- Youth and Open Show starting at 8am

Saturday

- Parade of Champions 9:45am
- Clinic 10am
- Costume Class 12pm
- Extreme Trail and Fun Classes 1pm

Sunday

- Drill Team Exhibitions
- Junior Fair horses may leave at 7pm.



Notice: show bills for all of this year's approved shows are included in this newsletter.



Waukesha 4-H Clinics

Wednesday, June 19, 5:30p
Trail Obstacle Clinic
Waukesha County Expo Center

Saturday, July 20, 10a
TBD
Waukesha County Expo Center During Fair

Send your Midwest Horse Fair clinic writeups to 4hclinics@gmail.com



State 4-H Events

June 28-30, 2024
State 4-H Hunt & Dressage Show & Clinics
Entry Deadline: Postmarked by May 15
[More Information Here](#)

September 7, 2024
State 4-H Gymkhana Show
Entry Deadline: August 1
[More Information Here](#)

September 13-15, 2024
State 4-H Horse Expo
Entry Deadline: August 1
[More Information Here](#)



What are those classes?

Halter	Shown in-hand; judged on the confirmation of the horse.
Showmanship	Shown in-hand; judged on the exhibitor's ability to show the horse at halter through a pattern.
Equitation or Horsemanship	Shown ridden; judged on the skill of the rider, typically through a pattern.
Pleasure or Hunter under Saddle	Shown ridden; judged on the equine and their appearance of being a pleasure to ride at requested gaits in both directions on the rail.
Trail	Shown either in-hand or ridden; judged on both the rider and equine through specific obstacles.
Hunter Hack	Shown ridden (English); judged on the equine at requested gaits in both directions in the ring, and then over two low fences (jumps).
Discipline Rail	Shown ridden; judged on the equine at requested gaits, as well as more difficult maneuvers, such as side pass, hand gallop, pivot, back up, roll back, lead change, extend trot, counter canter (lope).
Dressage Suitability	Shown ridden; judged on the horses' suitability to do dressage at requested gaits in both directions in the ring.

Abbreviations

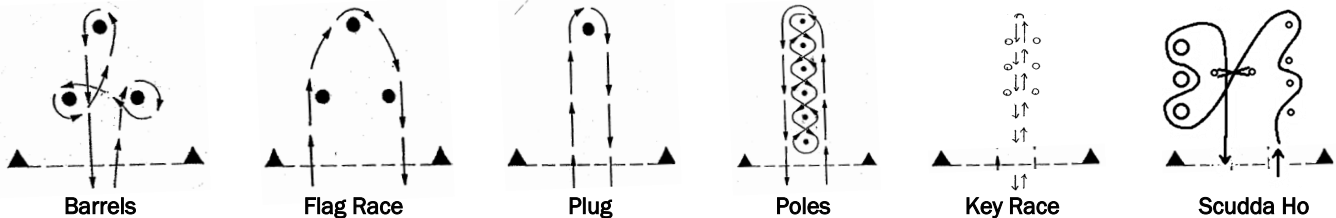
W/T	Walk/Trot
WTC	Walk/Trot/Canter
SMS	Showmanship
EQ	Equitation
HMS	Horsemanship
HUS	Hunter Under Saddle
WP	Western Pleasure
E/W	English or Western
H/P	Horse or Pony
AQHA	American Quarter Horse Association

A detailed description of each class, including required tack and attire, judging emphasis, class procedures, and more can be found [HERE](#)

Showbill Terminology

Lead Line	For beginner riders; rider will also have a handler walking along holding a lead line.
50/50	Class is judged half on the rider and half on the equine.
Jackpot	Winner will earn a payout from entry fees.
Restricted	Riders entering this class may not enter any other class that requires cantering
At Will	Riders can perform these patterns at any time during the at-will timeframe
Highpoint	Points are earned for placings in each class depending on the number of entries. The rider with the most points from all classes combined during the show wins highpoint.
Trailer/Jumpout	Fee per equine if not reserving a stall.

Speed Classes, aka Gymkhana

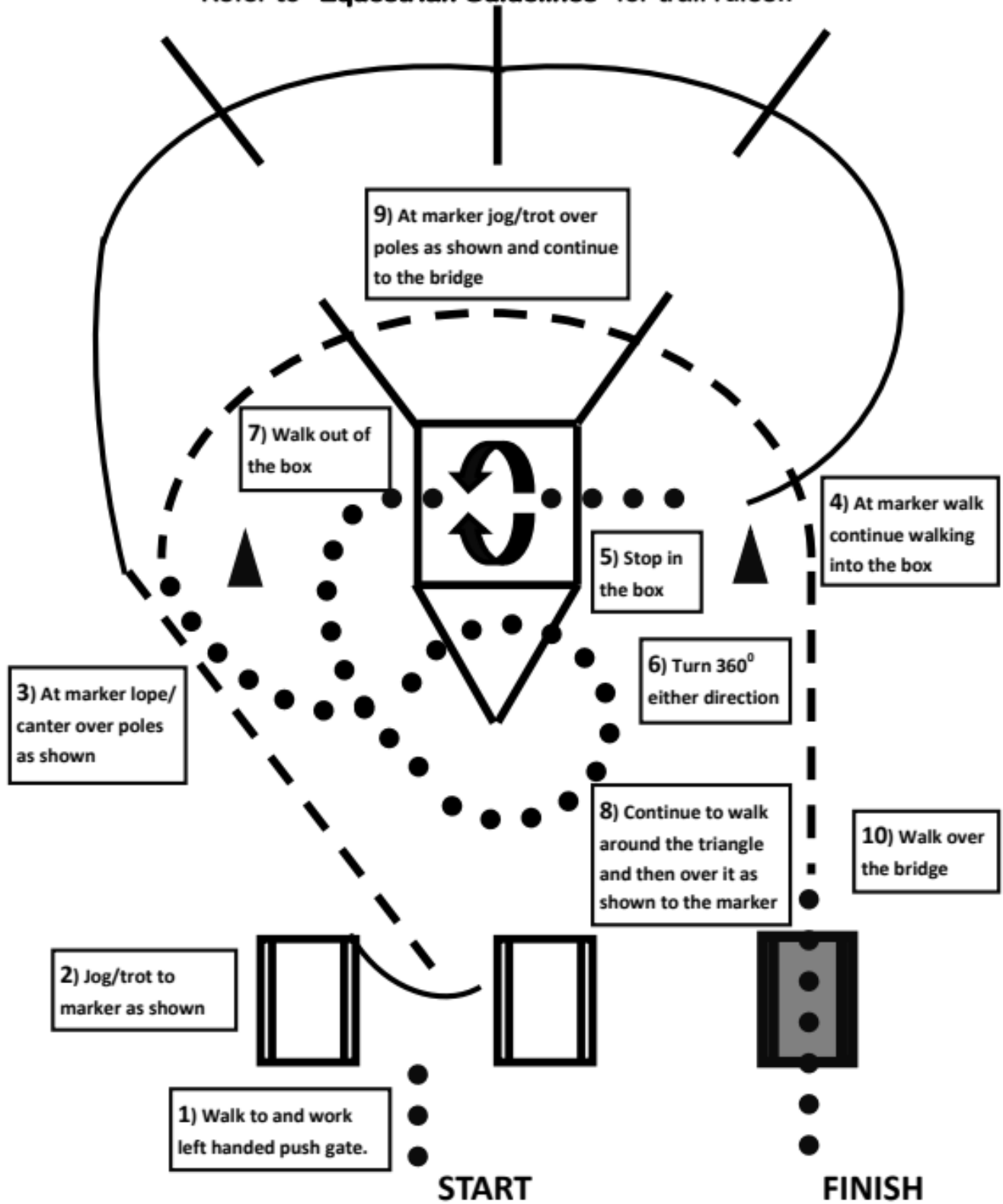


Ribbon Race	Two horses and riders; hold a length of ribbon between the riders for the pattern without breaking or dropping it.
Egg & Spoon	Hold an egg on a spoon without dropping it while following the announcer's instructions.
Flag Race	Pick a flag up out of a bucket on the first barrel and deposit it in the bucket on the third barrel.



2024 State 4-H Expo Trail Pattern

Horseless Horse Trail will trot all designated lope/canter
Refer to "Equestrian Guidelines" for trail rules!!



FOX RIVER SADDLE CLUB 2024 OPEN SHOW SERIES

JUNE 2 -- JUNE 23 -- August 18

Kathy Findley -- Jill Koch -- Patty Banwart

LOCATION; WEST 20 SADDLE CO-EAST TROY, WI

9:00 AM SHARP

1. NOVICE HORSE AT HALTER (3 OR LESS – 1ST PRIOR TO 1/1/23 ON HORSE)
2. AQHA @ HALTER
3. SPOTTED/COLOR BREED @ HALTER
4. ANY OTHER BREED @ HALTER
5. WESTERN TYPE @ HALTER
6. ENGLISH TYPE @ HALTER
7. ** GRAND/RES GRAND CHAMPION @ HALTER
8. 4-H SHOWMANSHIP
9. SR SHOWMANSHIP
10. JR SHOWMANSHIP
11. JRJR SHOWMANSHIP
12. OPEN SHOWMANSHIP
13. OPEN SHANKLESS SHOWMANSHIP

*** BREAK ***

14. LEAD LINE (10 & UNDER) E/W "MUST HAVE HALTER OVER BRIDDLER"
15. SHORT STIRRUP WALK ONLY (10 & UNDER) E/W
16. 4-H ENGLISH PLEASURE
17. SR ENGLISH PLEASURE
18. JR ENGLISH PLEASURE
19. JRJR ENGLISH PLEASURE
20. 4-H ENGLISH EQUITATION
21. SR ENGLISH EQUITATION
22. JR ENGLISH EQUITATION
23. JRJR ENGLISH EQUITATION
24. OPEN W/T/C ENGLISH 50/50 EQU/PLEAS
25. **4-H W/T ENGLISH PLEASURE
26. **SR W/T ENGLISH PLEASURE
27. **JR W/T ENGLISH PLEASURE
28. **JRJR W/T ENGLISH PLEASURE
29. **4-H W/T ENGLISH EQUI.
30. **SR W/T ENGLISH EQUI
31. **JR W/T ENGLISH EQUI
32. **JRJR W/T ENGLISH EQUI
33. ** WALK/TROT ENGLISH 50/50

** BREAK **

34. 4-H WESTERN PLEASURE
35. SR WESTERN PLEASURE
36. JR WESTERN PLEASURE
37. JRJR WESTERN PLEASURE
38. 4-H WESTERN HORSEMANSHIP
39. SR WESTERN HORSEMANSHIP
40. JR WESTERN HORSEMANSHIP
41. JRJR WESTERN HORSEMANSHIP
42. OPEN W/T/C WESTERN 50/50 HORSEM/PLEASURE
43. **4-H W/T WESTERN PLEASURE
44. **SR W/T WESTERN PLEASURE
45. **JR W/T WESTERN PLEASURE
46. **JRJR W/T WESTERN PLEASURE
47. **4-H W/T WESTERN HORSEMANSHIP
48. **SR W/T WESTERN HORSEMANSHIP
49. **JR W/T WESTERN HORSEMANSHIP
50. **JRJR W/T WESTERN HORSEMANSHIP
51. **WALK TROT WESTERN 50/50

CURRENT NEGATIVE COGGINS REQUIRED FOR SHOW OFFICE

**CLASS FEE; \$50 ALL DAY FEE
HORSE RIDER COMBO
\$7 NON-MEMBER PER CLASS
\$6 MEMBER PER CLASS
\$5 LEADLINE & WALK ONLY
(NO OFFICE FEE)
\$5 OFFICE FEE PER COMBO
\$5 TRAILER JUMP OUT FEE**

AGE DIVISIONS 1/1/24

**JRJR 14 & UNDER
JR 15 – 20
SR 21 & OVER**

**DAY END HIGHPOINT
W/T/C EACH AGE GROUP
W/T EACH AGE GROUP**

**MAY NOT CROSS ENTER
W/T/C TO ** W/T**

**STALLS' CALL WEST 20
262 642 4272**

**BRING 1 BAG OF SHAVINGS
\$30 DAY - \$40 OVERNIGHT
PAY FOX RIVER SADDLE CLUB**

NO DOGS ALLOWED AT WEST 20 SADDLE CO

**## FOX RIVER SADDLE CLUB
WEST 20 & WAUK 4-H
IS NOT RESPONSIBLE FOR ANY LOSS OF
OR PERSONAL INJURY TO HORSE OR PERSON
ON THE GROUNDS OR
LOSS OR DAMAGE OF ANY PERSONAL PROPERTY**

Maureen martin
Mmmartin332@gmail.com
414 614 0250



MFSC Open Pleasure Show

Dates: June 22, 2024 & August 3rd, 2024

Judges: To Be Announced

Club Grounds: N75 W25500 Hwy 164, Sussex, WI 53089

Gates open at 7a.m. Show to start no earlier than 8:30 a.m. Contact: Kellyn Homa – 262-707-7110



Halter

1. 3 & Under
 2. Pony/Mini
 3. English Type
 4. Western Type
 5. Arab/Half Arab
- *Grand/Reserve Halter*

Showmanship

6. 4-H Showmanship
7. Youth Showmanship
8. Junior Showmanship
9. Senior Showmanship
10. Sr. Sr. Showmanship
11. Jackpot Showmanship
12. Lead Line
13. Walk/Woah

* Break*

Hunter Under Saddle

14. Open W/T Restricted HUS
15. 4-H HUS (W/T) HUS
16. Youth (W/T) HUS
17. Junior HUS
18. Senior HUS
19. Sr. Sr. HUS
20. Jackpot HUS

Hunt Seat Equitation

21. Open W/T Restricted Equitation
22. 4-H (W/T) Equitation
23. Youth (W/T) Equitation
24. Junior Equitation
25. Senior Equitation
26. Sr. Sr. Equitation
27. Open Jackpot Equitation
28. Jackpot Hunter Hack
29. Jackpot Disciplined Rail E/W

Fees

- \$4/Class – Member
- \$7/Class – Non-member
- \$10 Office Fee/ Horse & Rider
- \$5 Printed Coggins fee

Optional Fees

- \$20/ Jackpot Class
- \$5 High Point Fee/ Horse & Rider

Cash Payouts

- Jackpots**
- 1st:** 50% of Total jackpot
- 2nd:** 25% of total jackpot
- Must have 5 participants for payouts

No refunds, class entry closes two classes before, & MFSC Reserves the right to combine/cancel classes

The fine Print: State law requires that all exhibitors show an original negative Coggins certificate dated within the past 12 months and provide a copy of the certificate for show records. MFSC will not be held responsible in any way for the loss or damage to any persons, animals, property or equipment that may be caused by any equine entered or due to the carelessness or negligence of the person(s) in charge of such a horse/pony or of their subordinates. Management reserves the right to excuse any equine for unruly behavior. The judge's decision is final and the AQHA rulebook will be followed. Helmets, properly fastened, are required for all riders the age 18 and under. **All dogs must be on a leash.**

* Lunch with open Hippology (Free)*

Western Pleasure

30. Open W/T Restricted WP
31. 4-H (W/T) WP
32. Youth (W/T) WP
33. Junior WP
34. Senior WP
35. Sr. Sr. WP

36. Jackpot Western Pleasure

Western Horsemanship

37. Open W/T Restricted HMS
38. 4-H (W/T) HMS
39. Youth (W/T) HMS
40. Junior HMS
41. Senior HMS

42. Sr. Sr. HMS

43. Jackpot Horsemanship

Open Trail

44. Open In-Hand Trail
45. Open W/T Trail
46. Open Trail



Open Horse Show Enrolled
June 22nd show only



EQUINE • CANINE • PORTRAIT • STUDIO



DCHA Buckle Chase Approved

High Point Awards for Each Division

- Horse/rider combo must enter at least **one** Halter class to be eligible for High Point.
- Halter placings will not count towards High Point
- Showmanship is the tie-breaker if needed.
- Jackpot classes & Trail **DO NOT** count



Age/ High Point Divisions

Open Restricted W/T: Open to any horse/rider combo.
Cannot cross enter W/T/C classes.

4-H: Open to any current 4-H youth regardless of county

Youth: 13 & Under

Junior: 18 & Under

Senior: 19 & Over

Sr. Sr.: 40 & Over



JUNIOR CLASS HORSE & PONIES SHOW

Friday, July 19, 2024

- Open to members of youth organizations registered with the fair, showing their project animals
- All entries must be made through the fair website by June 15, 2024
- Horses shown in Junior Fair classes may **not** be shown in Open classes

1. Youth Western Type at Halter

2. Youth English Type at Halter

3. Youth Pony / Mini at Halter

YOUTH HALTER CHAMPIONSHIP

10. Senior Youth Showmanship English/Western

11. Junior Youth Showmanship English/Western

12. Youth Pony / Mini Showmanship English/Western

YOUTH SHOWMANSHIP CHAMPIONSHIP E/W

15. Youth Reinsmanship Driving (Horse/Pony)

17. Youth Cones Driving (Horse/Pony)

19. Youth Walk/Trot English Pleasure

21. Senior Youth English Pleasure

22. Junior Youth English Pleasure

23. Youth Pony English Pleasure

YOUTH ENGLISH PLEASURE CHAMPIONSHIP

26. Youth Walk/Trot English Equitation

28. Senior Youth English Equitation

29. Junior Youth English Equitation

30. Youth Pony English Equitation

YOUTH ENGLISH EQUITATION CHAMPIONSHIP

34. Youth Walk/Trot Western Pleasure

36. Senior Youth Western Pleasure

37. Junior Youth Western Pleasure

38. Youth Pony Western Pleasure

YOUTH WESTERN PLEASURE CHAMPIONSHIP

41. Youth Walk/Trot Western Horsemanship

43. Senior Youth Western Horsemanship

44. Junior Youth Western Horsemanship

45. Youth Pony Western Horsemanship

YOUTH WESTERN HORSEMANSHIP CHAMPIONSHIP

48. Youth Walk/Trot Ranch Pleasure

49. Youth Ranch Pleasure

51. Senior Youth In-Hand Trail (E/W, H/P)

52. Junior Youth In-Hand Trail (E/W, H/P)

YOUTH IN-HAND TRAIL CHAMPIONSHIP

55. Youth Walk/Trot Trail (E/W, H/P)

56. Senior Youth Trail (E/W, H/P)

57. Junior Youth Trail (E/W, H/P)

YOUTH TRAIL CHAMPIONSHIP (E/W, H/P)

AGE DIVISIONS

- Senior Youth: age 16 and above
- Junior Youth: age 15 and below
- Youth Pony: all ages

YOUTH CHAMPIONSHIP CLASSES

- Top 2 Blues from Youth Classes
- Neck ribbons will be awarded for Grand and Reserve

DAILY HIGH POINT

- High Points will be awarded for Senior Youth, Junior Youth, and Youth Pony/Mini
- Halter points count toward High Point

REGISTRATION

- Registration is open now through June 15
- <https://www.waukeshacountyfair.com/entry-info/>
- Entry fee is \$50/horse total, covers all classes entered
- Stall fee is \$25 for the duration of the fair, refunded when stall is cleaned at end of fair
- No cross-entering in halter
- **No cross-entering Walk/Trot or Walk/Trot/Canter**

PLACINGS

- Placings are Danish Judging, meaning judges place riders against a standard, instead of against each other
- Premiums: Blue \$8.00, Red \$7.00, White \$6.00, Pink \$5.00



HORSE AND PONY EXHIBITS AND CONTESTS

Tuesday, July 16 and Thursday, July 18, 2024

- Hippology Contests will be held Thursday between 4:00 p.m. and 6:00 p.m. at the Horse Rings
- Educational displays, posters, and other exhibits are judged Tuesday using the Face-to-Face Judging System. All exhibits must be in place by 7 p.m. Tuesday. One exhibit per entry number
- All posters should be 14" x 22" in size. Posters should be on poster board. Those not adhering to these two rules will be dropped one placing.
- Displays should be more detailed in explanation than a poster. They must be three dimensional or tri-fold and include articles to assist in explanations. A display should be more than simply a 14" x 22" poster, and should visually demonstrate division animal knowledge and/or division project possibilities.
- Photography can be snap shots or enlargements in color or black and white of the division animal or a grouping of division animals. Photograph(s) must be mounted on poster board and be ready for hanging.

1. Any horse poster.
2. Any creative art entry.
3. Any horse photograph taken by horse project member.
4. Any other horse entry.
5. Model horse collection exhibit.
6. Any other exhibit related to the Horseless Horse or Equitation Project.
7. Hippology Contest (Senior Youth age 16 and above)
8. Hippology Contest (Junior Youth age 15 and below)

REGISTRATION

- Registration is open now through June 15
- <https://www.waukeshacountyfair.com/entry-info/>
- **Department 210: HORSE AND PONY EXHIBITS AND CONTESTS**

PLACINGS

- Placings are Danish Judging, meaning judges place riders against a standard, instead of against each other
- Premiums: Blue \$1.75, Red \$1.50, White \$1.25, Pink \$1.00



2024 Fun Shows

"Father's Day Fun Show" June 15

&

"Falls Comin' Fun Show" September 21

Rain Dates: June 16 September 22

9:00AM Start Time (Gates open at 7:30 AM)

MFSC Grounds - N75W25500 Hwy 164, Sussex, WI 53089

- | | |
|---|--|
| 1. Lead Line Barrels* | 13. Egg & Spoon (all in arena at once) |
| 2. Trotting Barrels | 14. Lead Line Poles* |
| 3. Youth Barrels | 15. Trotting Poles |
| 4. Junior Barrels | 16. Youth Poles |
| 5. Senior Barrels | 17. Junior Poles |
| 6. Jackpot Barrels ⁵ | 18. Senior Poles |
| 7. Father's Only Jackpot Barrels ⁵ | 19. Jackpot Poles ⁵ |
| 8. Lead Line Flag Race* | 20. Lead Line Key Race* |
| 9. Trotting Flag Race | 21. Trotting Key Race |
| 10. Youth Flag Race | 22. Youth Key Race |
| 11. Junior Flag Race | 23. Junior Key Race |
| 12. Senior Flag Race | 24. Senior Key Race |
| 13. Ribbon Race (team) | 25. W/T Trail (At Will)) |
| 14. Stick Horse (during lunch; no fee) | 26. W/T/C Trail (At Will) |

FOOD and BEVERAGES available on show grounds

Visit our club at www.menomoneefallssaddleclub.com or on Facebook

Information:

- MFSC will NOT be responsible for lost or stolen articles, for any loss, damages, or injury to horse, rider or spectator. You enter and ride at your own risk.
- SEI approved helmets MUST be worn by ALL minor participants. NO Helmet waivers accepted. All minors must have a signed waiver at the show office signed by a parent or legal guardian only. Riders must wear boots with heels.
- Original Negative Coggins dated within last 12 mos. required to be given to office and put on file for season (as paper copy or \$5 fee to be printed by show office)
- All out of state horses must be accompanied by health certificates dated within 30 days of the show and also have an original negative Coggins test within the previous 12 months with a copy left at office.



Age Divisions:

- Seniors - 18 years and older as of January first, of the current year.
- Juniors - 11 Years and older as of January first, of the current year.
- Youth - 10 Years and under as of January first, of the current year.
- Lead Line - Any Age, must be led by person on the ground. *Can only enter Lead Line classes.

Costs:

- SHOW FEES - \$6 per class (MFSC Members receive \$1 off per class. Ask a member how to join)
- Office Fee per Horse/Rider combo \$5
- "\$" - Jackpot Class - \$20/horse+rider
CASH PAYOUT: 1st - 50% of pot 2nd - 25% of pot Must have 5 participants for payout!

More Information to be aware of:

- Entries must be made two classes ahead.
- Show will be held drizzle or shine unless hazardous conditions/heavy rain exist then rain date set above. If questions, please call or watch fb Menomonee Falls Saddle Club Group for updates!
- In case of discrepancies, the Show Committee decision is final.
- Absolutely NO running in or out of gate! This will result in a No Time for that class. This is for the safety of everyone.
- All dogs must be leashed. No dogs permitted in horse arenas or holding areas.
- The Menomonee Falls Saddle Club Grounds will close about one hour after the last class. Porta-Potty on club grounds with hand sanitizer.

Questions or concerns:

Rosie Lambert (414) 651-3266 – danandrosie2003@yahoo.com

Jeannie Zurbuchen Braun - (414) 750-8304

Speed Show

August 27th

DCHA Buckle
Chase Approved

Show starts at 9:00 am

COGGINS REQUIRED

Classes

1. Youth Poles
2. Adult poles
3. Master Poles
4. Jackpot poles
5. Youth Barrels
6. Adult Barrels
7. Master Barrels
8. Jackpot Barrels
9. Youth Plug
10. Adult Plug
11. Master Plug
12. Jackpot Plug
13. Youth Flag
14. Open Flag
15. Ribbon Race
16. Youth Keyhole
17. Open Keyhole
18. Skudaho

Starting at noon earliest

75%
Payback

Pole Exhibitions-\$5
2D Youth Poles-\$20
2D Open Poles-\$25

Barrel Exhibitions-\$5
4D Youth Barrels-\$20
4D Master Barrels-\$20
4D Open Barrels-\$25

Food Truck

Onsite

Location:

Menomonee Falls Saddle Club
menomoneefallssaddleclub.com